

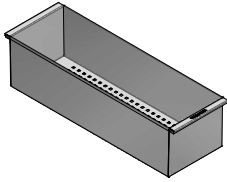
1VLB

Rev.1

DESCRIZIONE Vaschetta forata in acciaio inox
DESCRIPTION Stainless steel colander

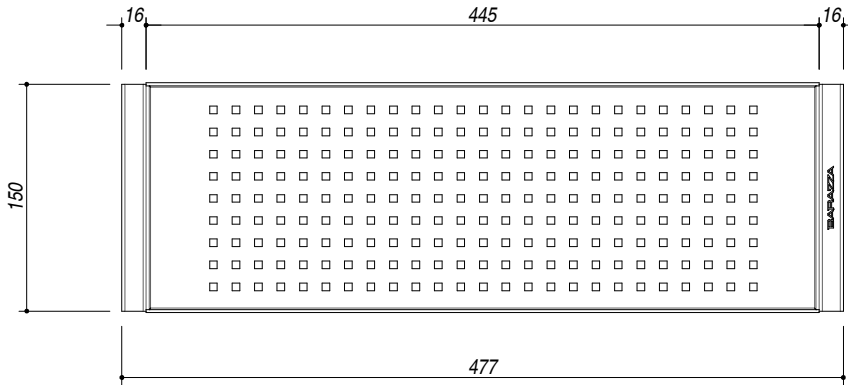
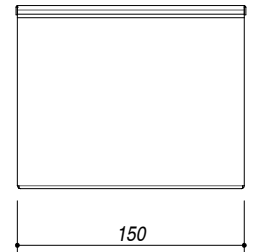
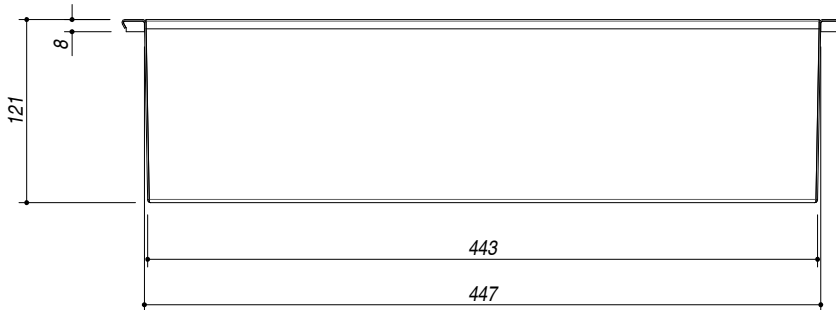
PESO LORDO 1.5 kg
GROSS WEIGHT

DIMENSIONI IMBALLO 510x160x130 mm
PACKAGING DIMENSIONS



ACCIAIO INOX
Stainless steel

- Per lavelli Lab con 2 vasche, 1 vasca + gocc; 2 vasche + gocc. e vasche Flexi
 (For Lab sinks with 2 bowls, 1 bowls + drainer, 2 bowls drainer and Flexi bowls)



SCALA DISEGNO 1:5
DRAWING SCALE



TUTTE LE MISURE IN mm
ALL MEASURES IN mm

TOLLERANZA LINEARE: ± 0.5 mm
LINEAR TOLLERANCE

TOLLERANZA ANGOLARE: ± 0.2 °
ANGULAR TOLLERANCE

PER QUALSIASI CONTESTAZIONE SI FARA' RIFERIMENTO ESCLUSIVAMENTE A QUESTO DISEGNO
 For any dispute the company will refer exclusively to this drawing

BARAZZA Barazza s.r.l. - Via Risorgimento, 14 - 31025 Sarono di S.Lucia di P. (TV) Italy
 Tel. +39/0438/62888 - Fax +39/0438/64901 - info@barazzasrl.it - www.barazzasrl.it
 Documento di proprietà aziendale. La Società tutelerà i propri diritti a termini di legge.

