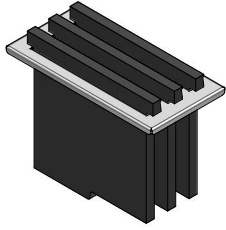


1CPT

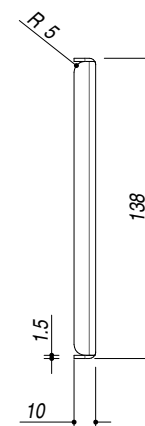
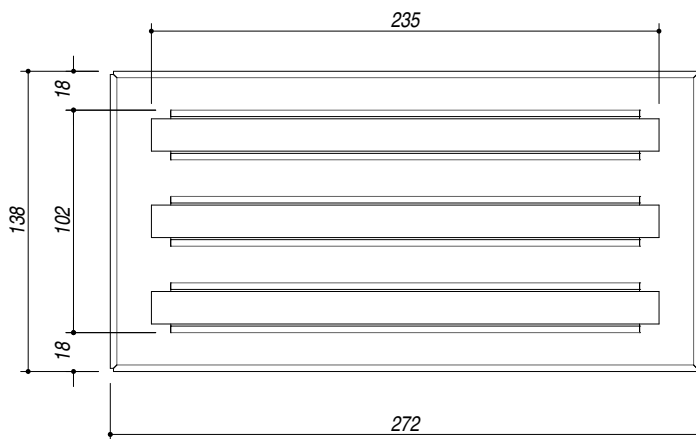
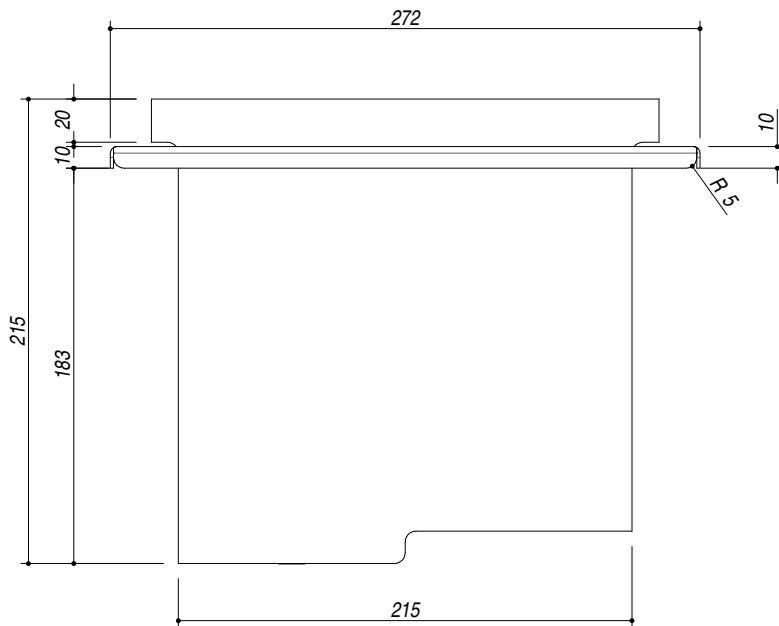
DESCRIZIONE Portataglieri con taglieri
DESCRIPTION Chopping board holder with chopping board

PESO LORDO 3,5 kg **DIMENSIONI IMBALLO** 300x230x120 mm
GROSS WEIGHT **PACKAGING DIMENSIONS**



ACCIAIO INOX e HPL
Stainless Steel and HPL

- Acciaio Inox AISI 304 di spessore elevato (*AISI 304 extra thick stainless steel*)
- 3 taglieri in HPL nero (*3 black HPL chopping boards*)
- Taglieri con sistema di aggancio magnetico (*chopping board with magnetic affixing system*)



SCALA DISEGNO 1:3.5

TUTTE LE MISURE IN mm
ALL MEASURES IN mm

TOLLERANZA LINEARE: ± 0.5 mm
LINEAR TOLERANCE

TOLLERANZA ANGOLARE: ± 0.2 °
ANGULAR TOLERANCE

PER QUALSIASI CONTESTAZIONE SI FARA' RIFERIMENTO ESCLUSIVAMENTE A QUESTO DISEGNO
 For any dispute the company will refer exclusively to this drawing

BARAZZA Barazza s.r.l. - Via Risorgimento, 14 - 31025 Sarano di S. Lucia di P. (TV) Italy
 Tel. +39/0438/62888 - Fax +39/0438/64901 - info@barazzasrl.it - www.barazzasrl.it
 Documento di proprietà aziendale. La Società tutelerà i propri diritti a termini di legge.



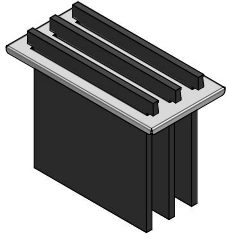
1CPT_

rev.1

DESCRIZIONE Portataglieri con taglieri
DESCRIPTION Chopping board holder with chopping board

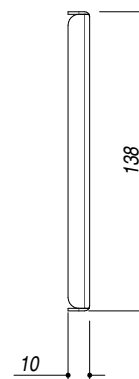
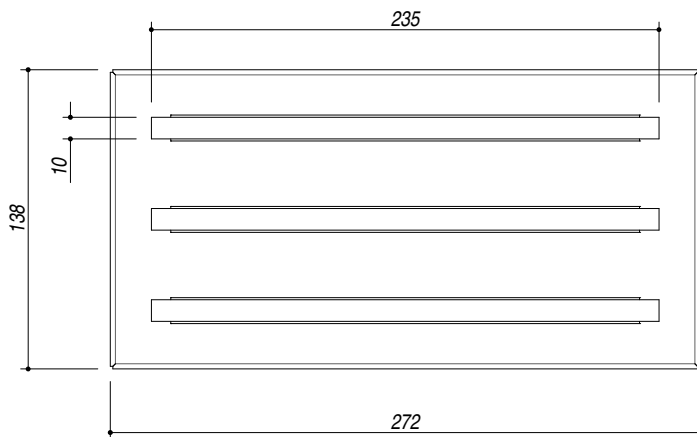
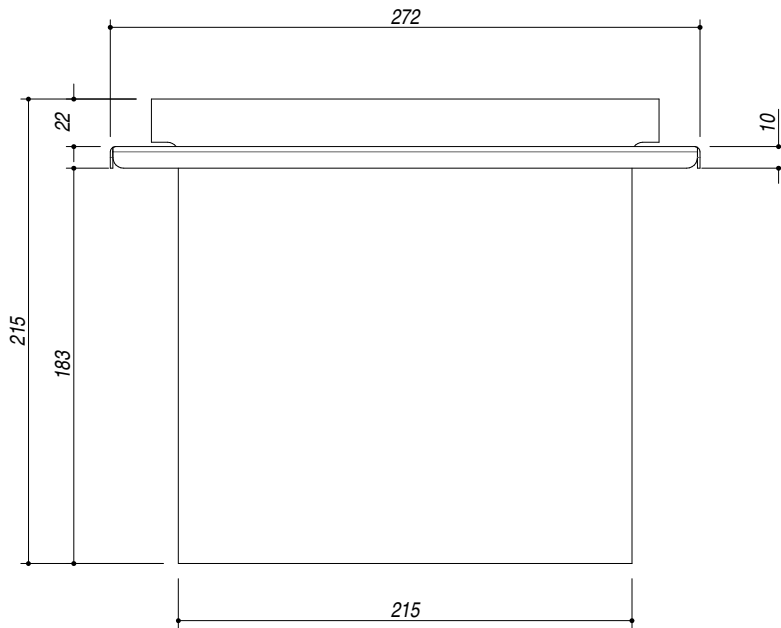
PESO LORDO 3,5 kg **DIMENSIONI IMBALLO** 300x230x120 mm
GROSS WEIGHT **PACKAGING DIMENSIONS**

1CPT ACCIAIO SATINATO SATIN STEEL
 1CPTN ACCIAIO NERO BLACK STEEL



ACCIAIO INOX e FENIX
Stainless Steel and FENIX

- Acciaio Inox AISI 304 di spessore elevato (*AISI 304 extra thick stainless steel*)
- 3 taglieri in FENIX nero (*3 black FENIX chopping boards*)



SCALA DISEGNO
DRAWING SCALE

1:3.5



TUTTE LE MISURE IN mm
ALL MEASURES IN mm

TOLLERANZA LINEARE: ± 0.5 mm
LINEAR TOLERANCE

TOLLERANZA ANGOLARE: ± 0.2 °
ANGULAR TOLERANCE

PER QUALSIASI CONTESTAZIONE SI FARA' RIFERIMENTO ESCLUSIVAMENTE A QUESTO DISEGNO
 For any dispute the company will refer exclusively to this drawing

BARAZZA Barazza s.r.l. - Via Risorgimento, 14 - 31025 Sarano di S. Lucia di P. (TV) Italy
 Tel. +39/0438/62888 - Fax +39/0438/64901 - info@barazzasrl.it - www.barazzasrl.it
 Documento di proprietà aziendale. La Società tutelera i propri diritti a termini di legge.

