

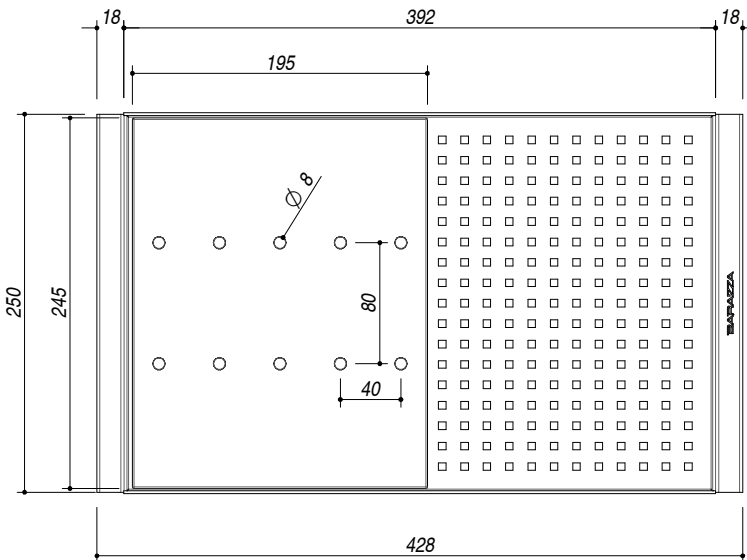
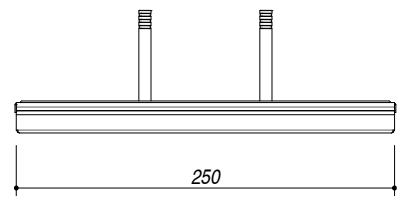
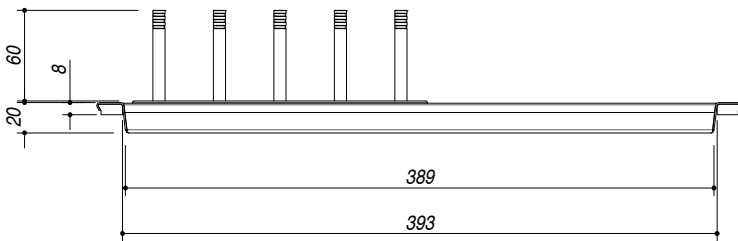
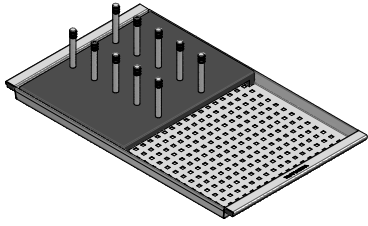
1CIFX

DESCRIZIONE Coprivasca rettangolare in acciaio inox con scolapiatti nero
DESCRIPTION Rectangular stainless steel bowl cover with black cutting board

PESO LORDO 1.9 kg **DIMENSIONI IMBALLO** 505x280x80 mm
GROSS WEIGHT **PACKAGING DIMENSIONS**

ACCIAIO INOX HPL NERO
Stainless steel **Black HPL**

- Per Vasche Quadre (esclusi cod. 1X1840I, 1X1840S, 1Q1740I, 1Q1740S).
 Per Lavelli Unique, Mood (esclusi cod. 1LMD91D, 1LMD91S) Easy, B_Open, Soul e Flexi.
 (For Square Bowls [excluding code 1X1840I, 1X1840S, 1Q1740I, 1Q1740S].
 For Unique, Mood [excluding code 1LMD91D, 1LMD91S], Easy, B_Open, Soul and Flexi sinks.)



SCALA DISEGNO 1:5
DRAWING SCALE



TUTTE LE MISURE IN mm
ALL MEASURES IN mm

TOLLERANZA LINEARE: ± 0.5 mm
LINEAR TOLERANCE

TOLLERANZA ANGOLARE: ± 0.2 °
ANGULAR TOLERANCE

PER QUALSIASI CONTESTAZIONE SI FARA' RIFERIMENTO ESCLUSIVAMENTE A QUESTO DISEGNO
 For any dispute the company will refer exclusively to this drawing

BARAZZA Barazza s.r.l. - Via Risorgimento, 14 - 31025 Sarano di S.Lucia di P. (TV) Italy
 Tel. +39/0438/62888 - Fax +39/0438/64901 - info@barazzasrl.it - www.barazzasrl.it
 Documento di proprietà aziendale. La Società tutelerà i propri diritti a termini di legge.

